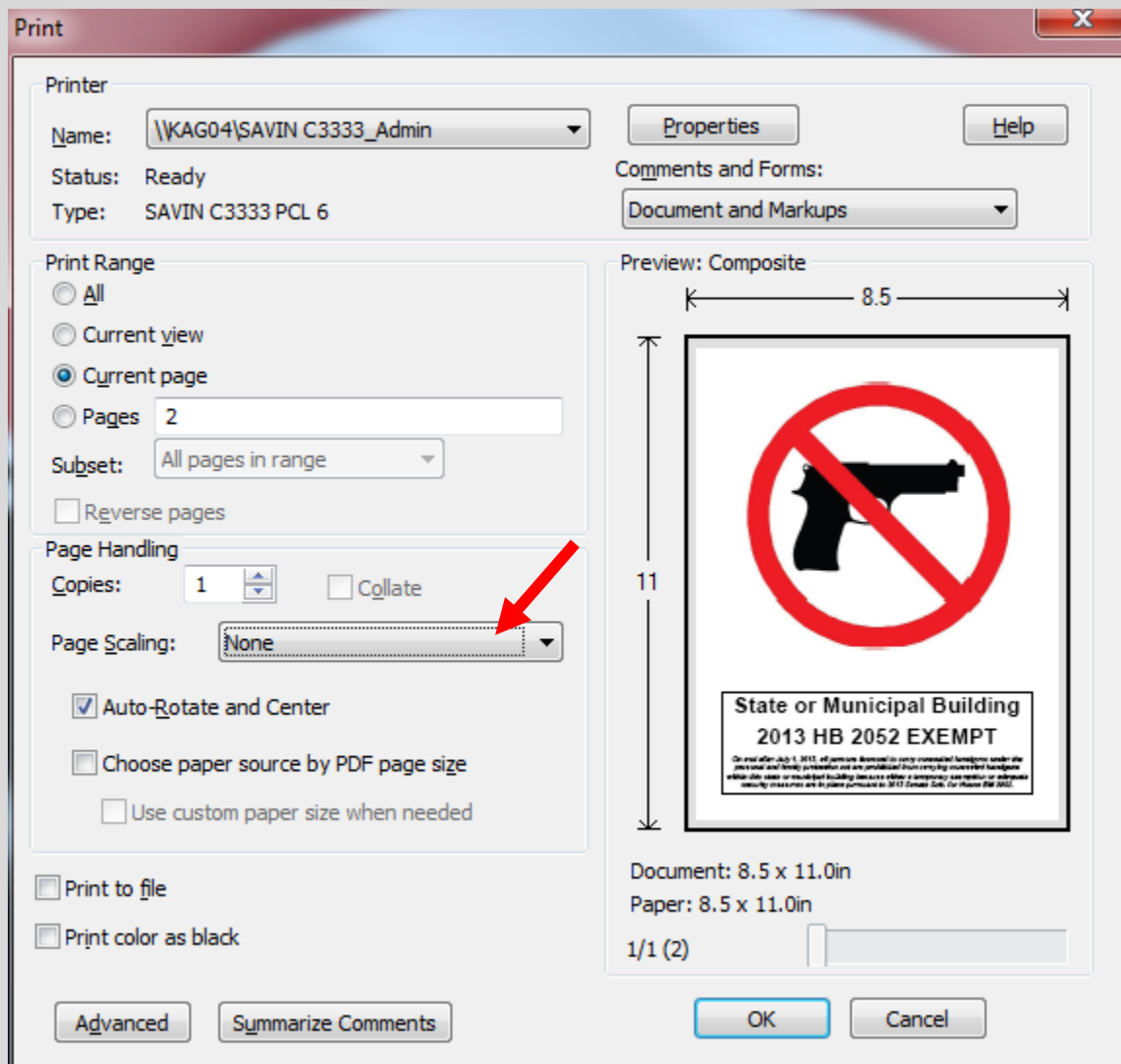


Exempt State and Municipal Buildings Signage Adopted by the Kansas Attorney General Effective July 1, 2013

PRINTING INSTRUCTIONS

To ensure that the graphic prints at the size required by the regulation (6" diameter), in the PDF print dialog window, be sure that **“Page Scaling”** is set to **“None.”**





State or Municipal Building

2013 HB 2052 EXEMPT

On and after July 1, 2013, all persons licensed to carry concealed handguns under the personal and family protection act are prohibited from carrying concealed handguns within this state or municipal building because either a temporary exemption or adequate security measures are in place pursuant to 2013 Senate Sub. for House Bill 2052.